

Blue Papules on the Lower Extremities

Henna Pearl, M.D.
Sarah Cely, M.D.
Loretta Davis, M.D.
Daniel Sheehan, M.D.

Division of Dermatology
Medical College of Georgia
at Georgia Health Sciences University

Conflicts and Disclosures

- No conflicts of interest or financial disclosures.

Case History

- 83 year old Caucasian female
- 6 months - asymptomatic blue lesions
- Bilateral feet with gradual progression
- Scattered lesions on face, neck, chest, arms
- Prior biopsy was read as hemangioma

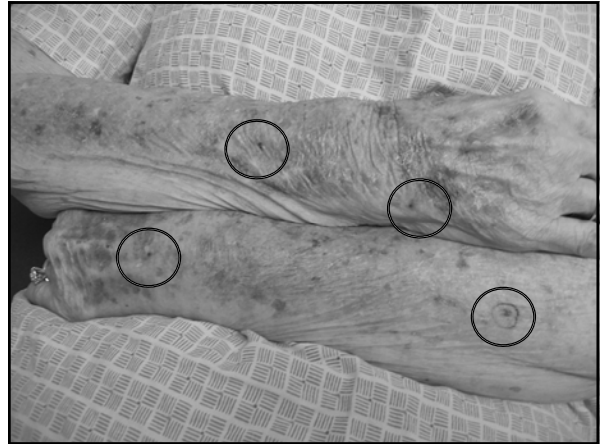
Medical and Surgical History

- Non-melanoma skin cancer
- Coronary artery disease
- Subdural hematoma
- Easy bleeding
- HIV negative

Social History

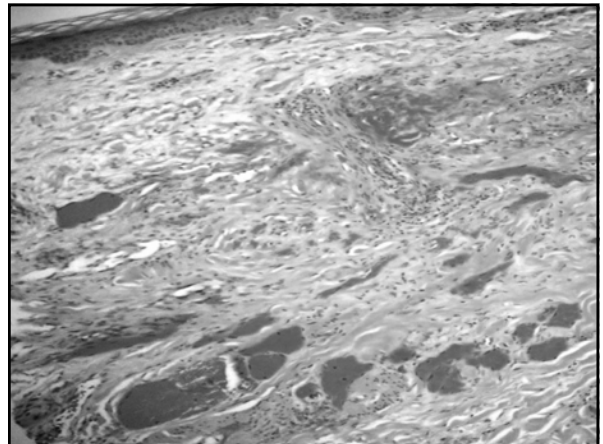
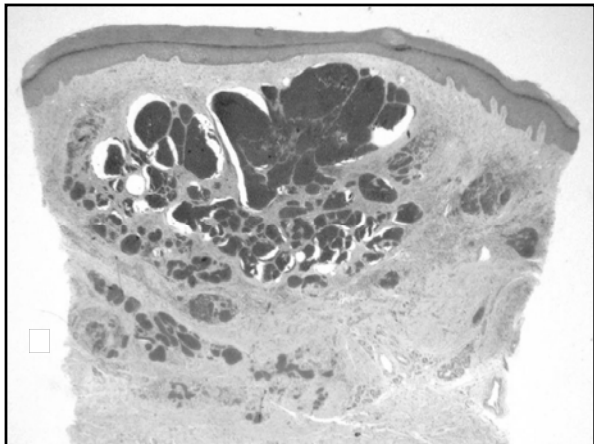
- Denies IV drugs or other HIV risk factors
- English heritage

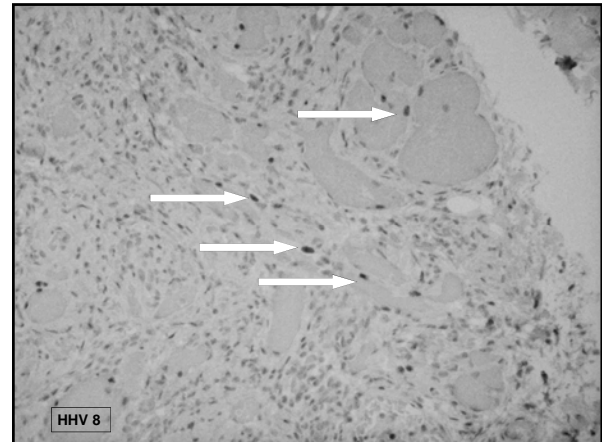
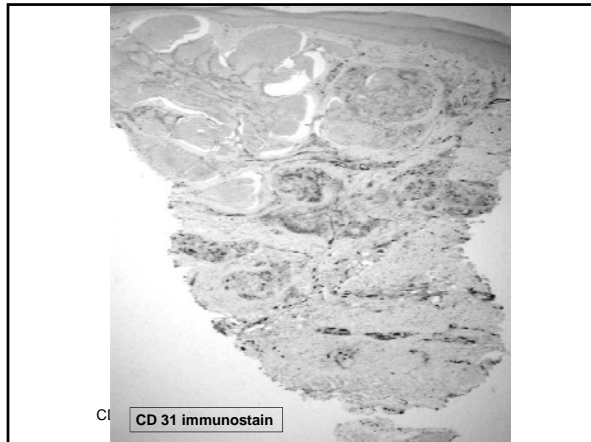




Clinical Differential Diagnosis

- Kaposi's Sarcoma
- Glomangioma
- Metastatic Melanoma
- Angiosarcoma





Lymphangioma-like Kaposi's Sarcoma

- Clinical lymphangioma-like lesions first described by Ronchese and Kern in 1957
- Histologic lymphangioma-like features first described by Gange and Jones in 1979
- Since Ronchese and Kern, approximately 21 cases have been reported

Lymphangioma-like Kaposi's Sarcoma

- Most commonly seen in the classic subtype
- Altered lower extremity hemodynamics and previous radiation have been implicated
- Often slowly progressive, but occasionally rapidly fatal
- Rare cases of LLKS associated with GI lesions

Treatment

- Widespread disease
 - Chemotherapy
 - Radiation
- Our patient to have localized palliative radiation

Diagnostic Pitfalls

- For the clinician
 - High index of suspicion even if female, HIV negative, non-Mediterranean heritage
 - Vascular processes warrant deep biopsies
- For the pathologist
 - Consider HHV-8 antibody staining
 - clinical widespread disease
 - dissecting vascular process

References

- Andard, V. et al. Misleading Kaposi's sarcoma: usefulness of anti HHV-8 immunostaining. [Translated from French] *Annales De Pathologie*. 2003 September; 23(4): 345-8.
- Cossu, S. et al. Lymphangioma-like Variant of Kaposi's sarcoma: A Clinicopathologic Study of Seven Cases with Review of the Literature. *The American Journal of Dermatopathology* 1997; 19 (1): 16.
- Davis, D.A. and Scott, D.M. Lymphangioma-like Kaposi's sarcoma: Etiology and literature review. *JAAD* 2000; 43: 123.
- Gange, R.W. and Jones, E.W. Lymphangioma-like Kaposi's sarcoma. *British Journal of Dermatology* 1979; 100: 327.
- Kalambokis, G. et al. Lymphangioma-like Kaposi's sarcoma with gastric involvement in a patient with lung cancer. *JEADV* 2005; 19: 638.
- Mohanna, S. et al. Lymphangioma-like Kaposi's sarcoma: report of four cases and review. *JEADV* 2006; 20: 999.
- Ramirez, J.A., et al. Lymphangioma-like Kaposi sarcoma. *Journal of Cutaneous Pathology* 2005; 32: 286. Ronchese, F. & Kern, A.B. (1957) Lymphangioma-like tumors in Kaposi's sarcoma. *Archives of Dermatology* 1957; 75: 418.